

The development of HEAPs

*Peter Herring,
English Heritage Characterisation team*

East Knoyle March 2009



ENGLISH HERITAGE

Thinking about change

It constantly affects the landscape, including those parts some see as 'timeless' or constant.

Change

Planned and considered, or unintentional

Positive and enhancing as well as disturbing or damaging

Perceptual as much as physical. Adjustments in understanding and meaning

We cannot stop change, if defined so widely.

But, we may determine to more deliberately and thoughtfully attempt to manage change,

Taking into account the interests of all those with a stake in it.

- Understanding the past helps us go forward
- Pass on 'legibility' to allow our successors to build identity, place and narratives from landscape, to see and understand the past

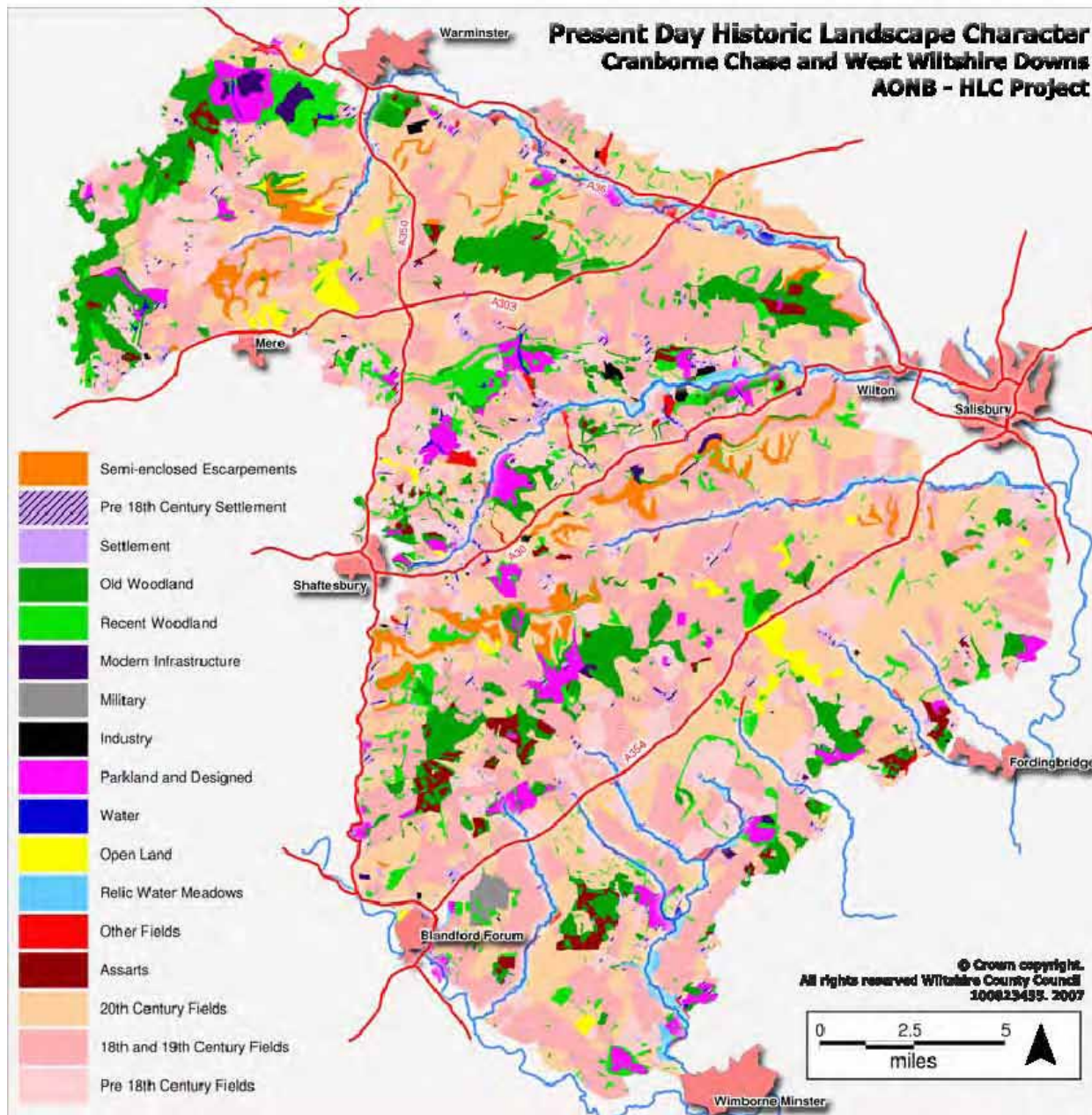




Two tools to help us use the past to guide future change

Historic Landscape Characterisation

HEAPs



Historic Landscape Characterisation (HLC).

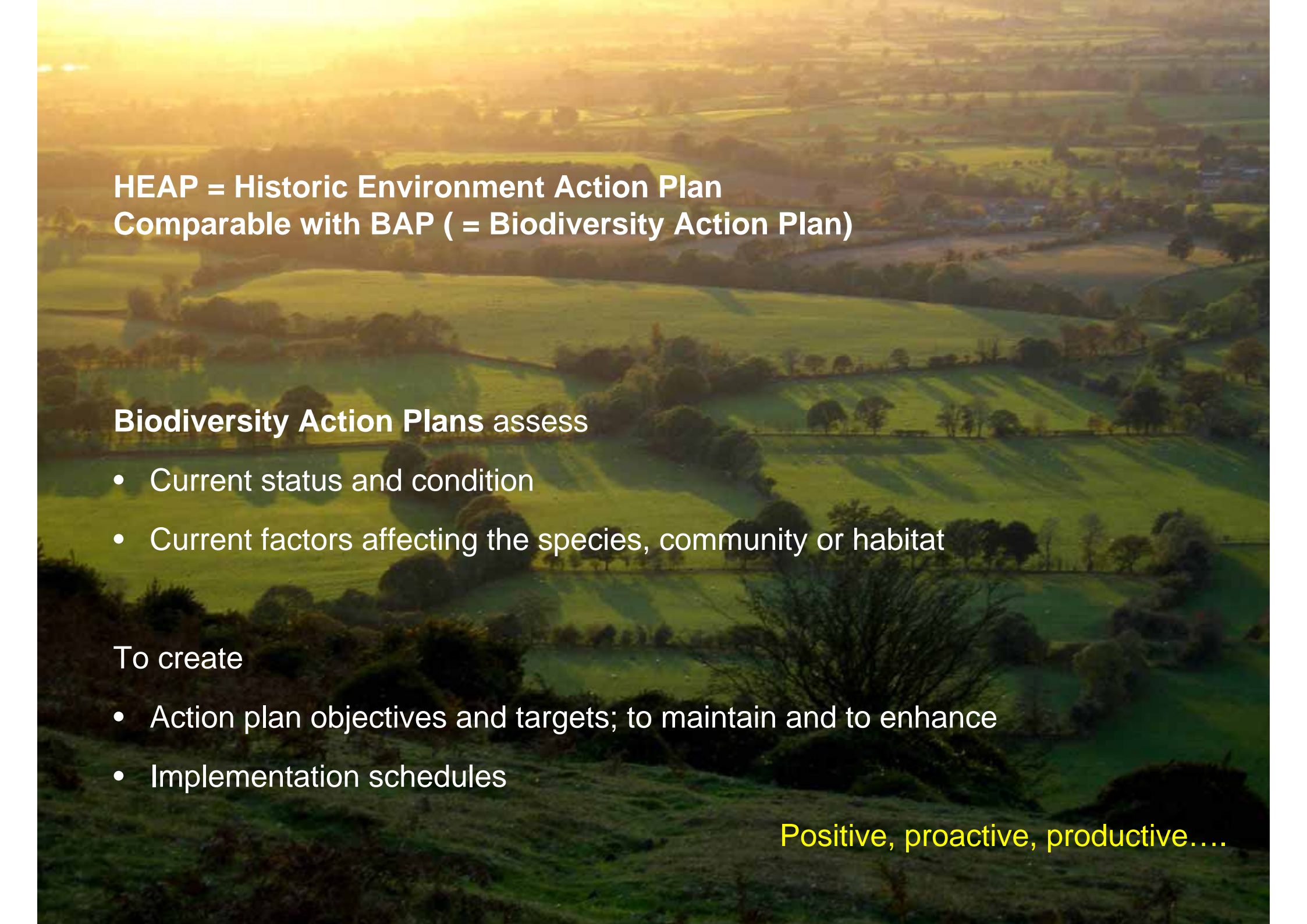
Identifying the predominant historic character of every part of a place.

Using systematic sources and archaeological ways of seeing and thinking.

Creating a framework of interpretation, of understanding, of meaning and of valuing.

Every part can be cared for.

HLC: A framework for action; a framework for Historic Environment Action Plans



HEAP = Historic Environment Action Plan
Comparable with BAP (= Biodiversity Action Plan)

Biodiversity Action Plans assess

- Current status and condition
- Current factors affecting the species, community or habitat

To create

- Action plan objectives and targets; to maintain and to enhance
- Implementation schedules

Positive, proactive, productive....

First HEAP on Bodmin Moor, Cornwall, 2003

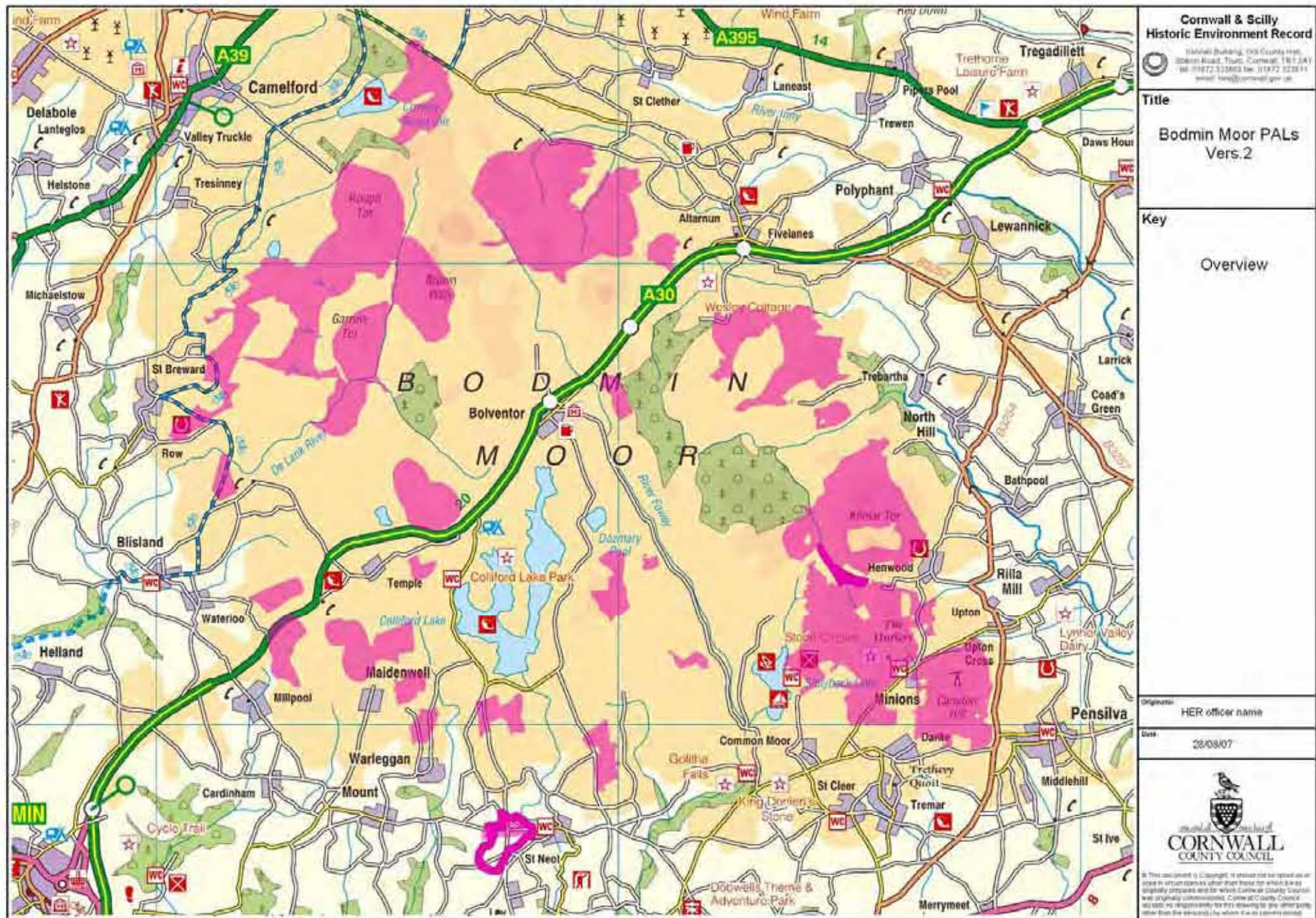
To inform debate on grazing levels on the Upland Rough Ground HLC type

Stages

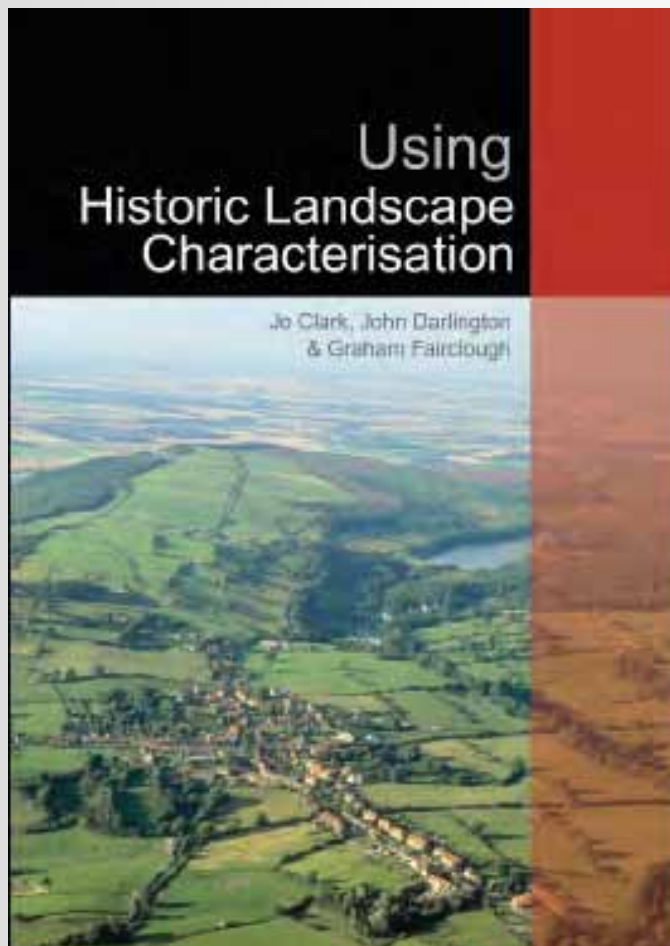
- 1 Understanding development and components of rough ground
- 2 Statements of significance
- 3 Forces for and effects of change
 - Assessment of positive and negative impacts of three scenarios:
 - Reducing grazing
 - Increasing grazing
 - No change
- 4 Objectives and targets

Main recommended action:

Common by common accommodation of various interests. Based on HLC mapping.



Using Historic Landscape Characterisation



Publication (2004) suggested stages in a **HEAP**

1: Refine characterisation

2: Character assessment & statements of significance

Analysis & Assessment

3: Assess change & impacts

Assess condition, historic change, processes and forces of change, impacts (positive and negative), vulnerability, risk

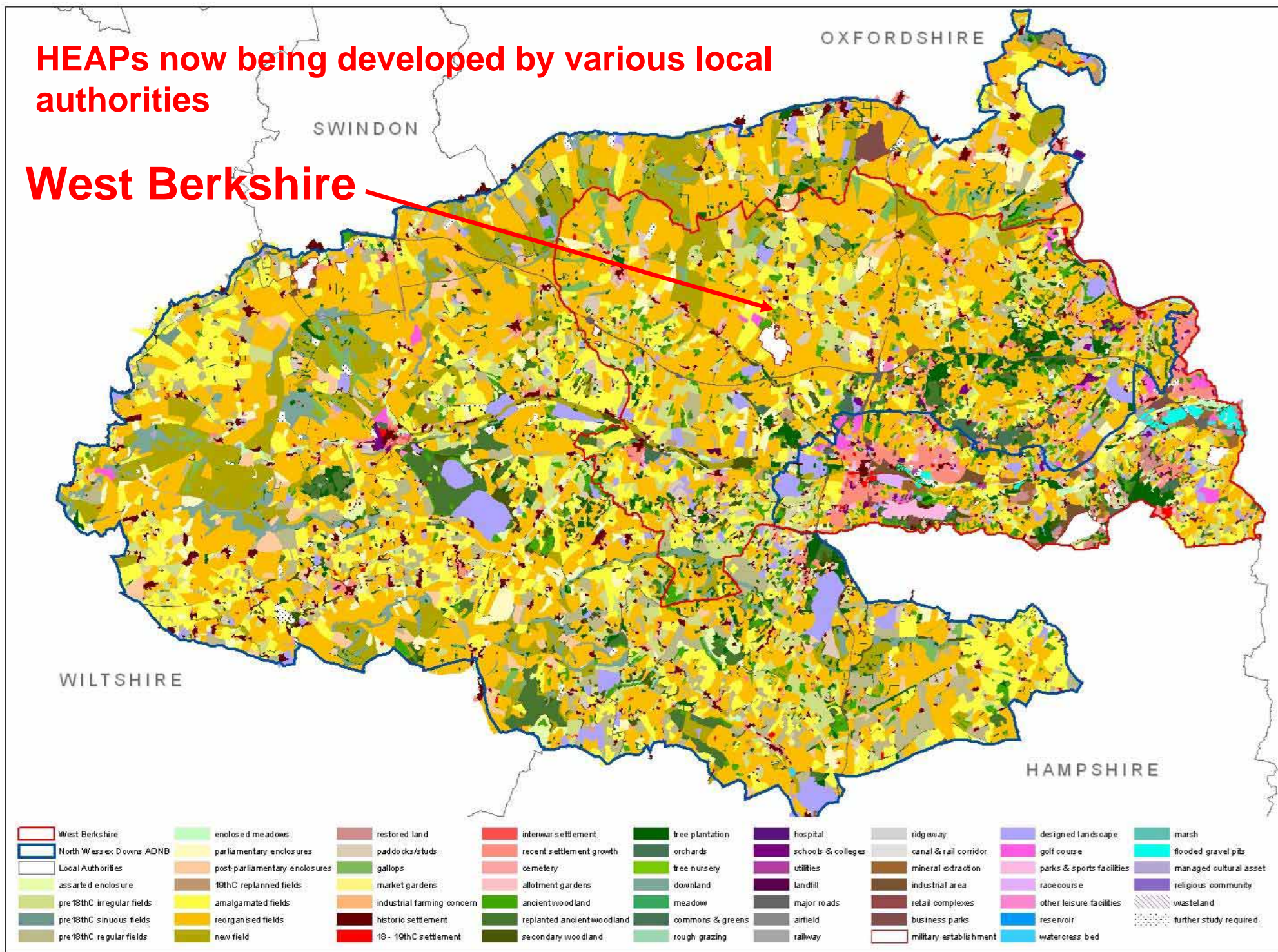
4: Strategies

Objectives, options, targets

5: Actions

HEAPs now being developed by various local authorities

West Berkshire



West Berkshire HEAPs

Based on Historic Environment Character Zones, subdivisions of Historic Environment Character Areas (HLC plus archaeology and buildings)

1 Understand historic landscape character

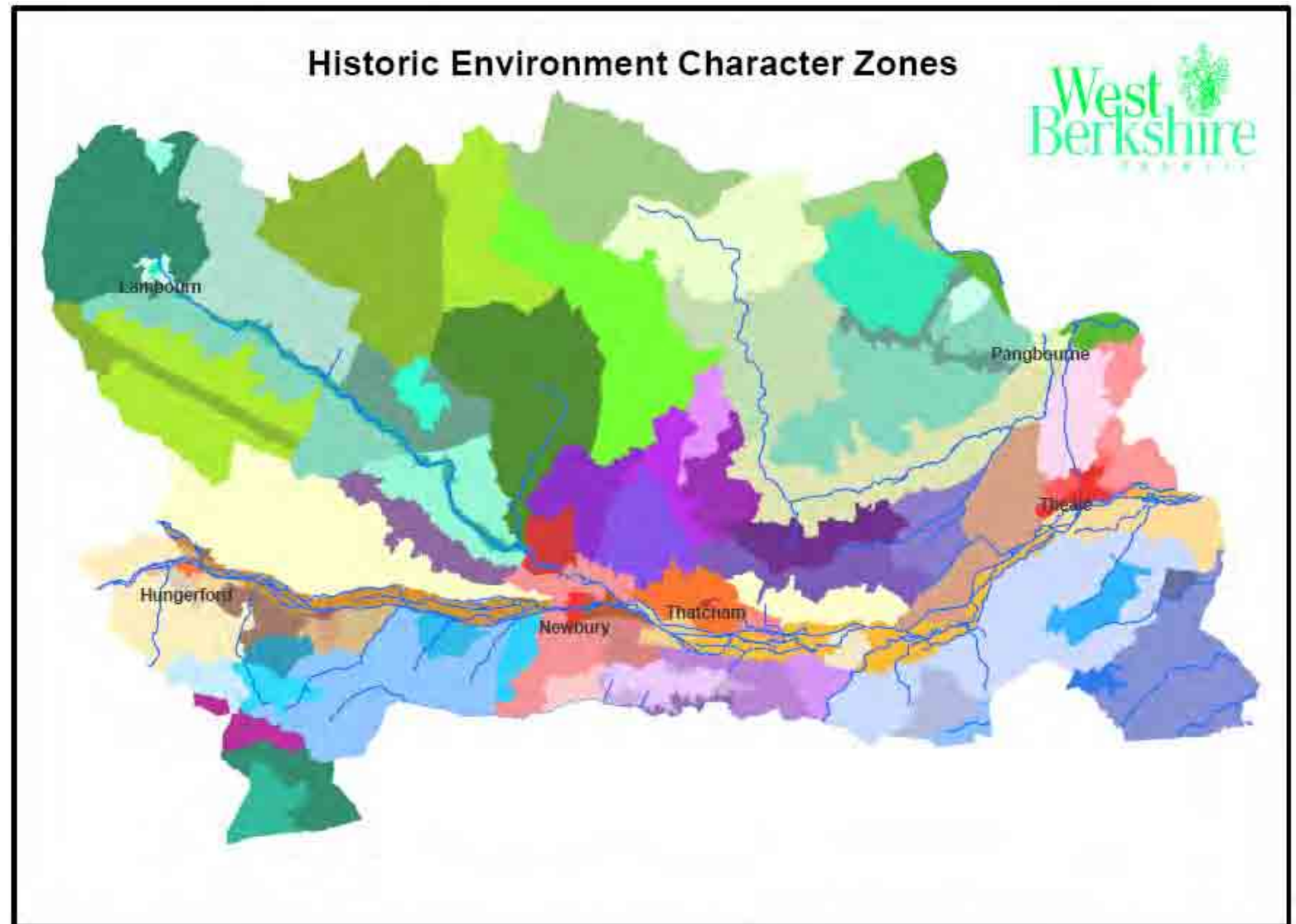
2 Historic Environment / Archaeology

3 Historic Environment Potential

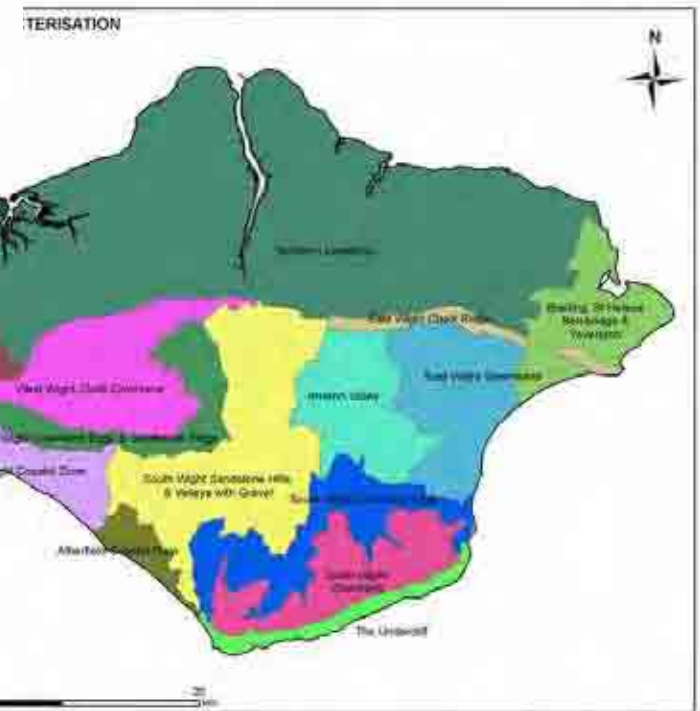
4 HEAP for:

Conservation Issues

Research Potential



The Isle of Wight County Archaeological Service HEAP Project



HEAP Areas, equivalent to West Berkshire HEC Areas

Figure 8. Historic Landscape Character Areas

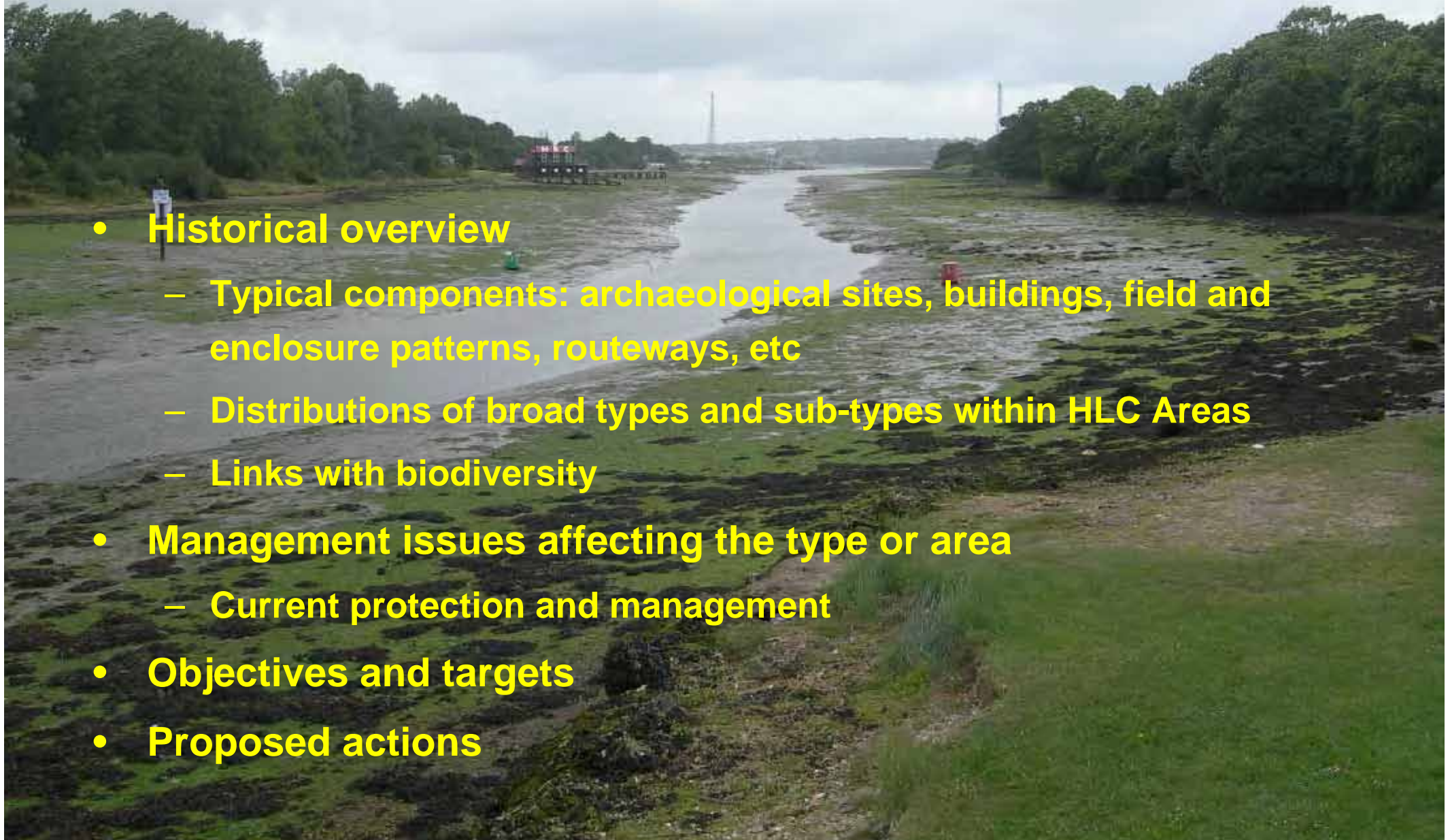
Two-year project: the most comprehensive HEAP programme so far undertaken

Each HEAP Area and Type considered in greater detail than Cornish or Berkshire examples



Systematic format of the HEAPs for selected HLC Broad Types and each HLC Area

- **Historical overview**
 - Typical components: archaeological sites, buildings, field and enclosure patterns, routeways, etc
 - Distributions of broad types and sub-types within HLC Areas
 - Links with biodiversity
- **Management issues affecting the type or area**
 - Current protection and management
- **Objectives and targets**
- **Proposed actions**





Most important aspect of the IOW HEAPs project is the success of the Partnership approach

Steering Group; regular, well-attended meetings

Steering Group members provided extensive and targeted information and input

Especially into management objectives and actions

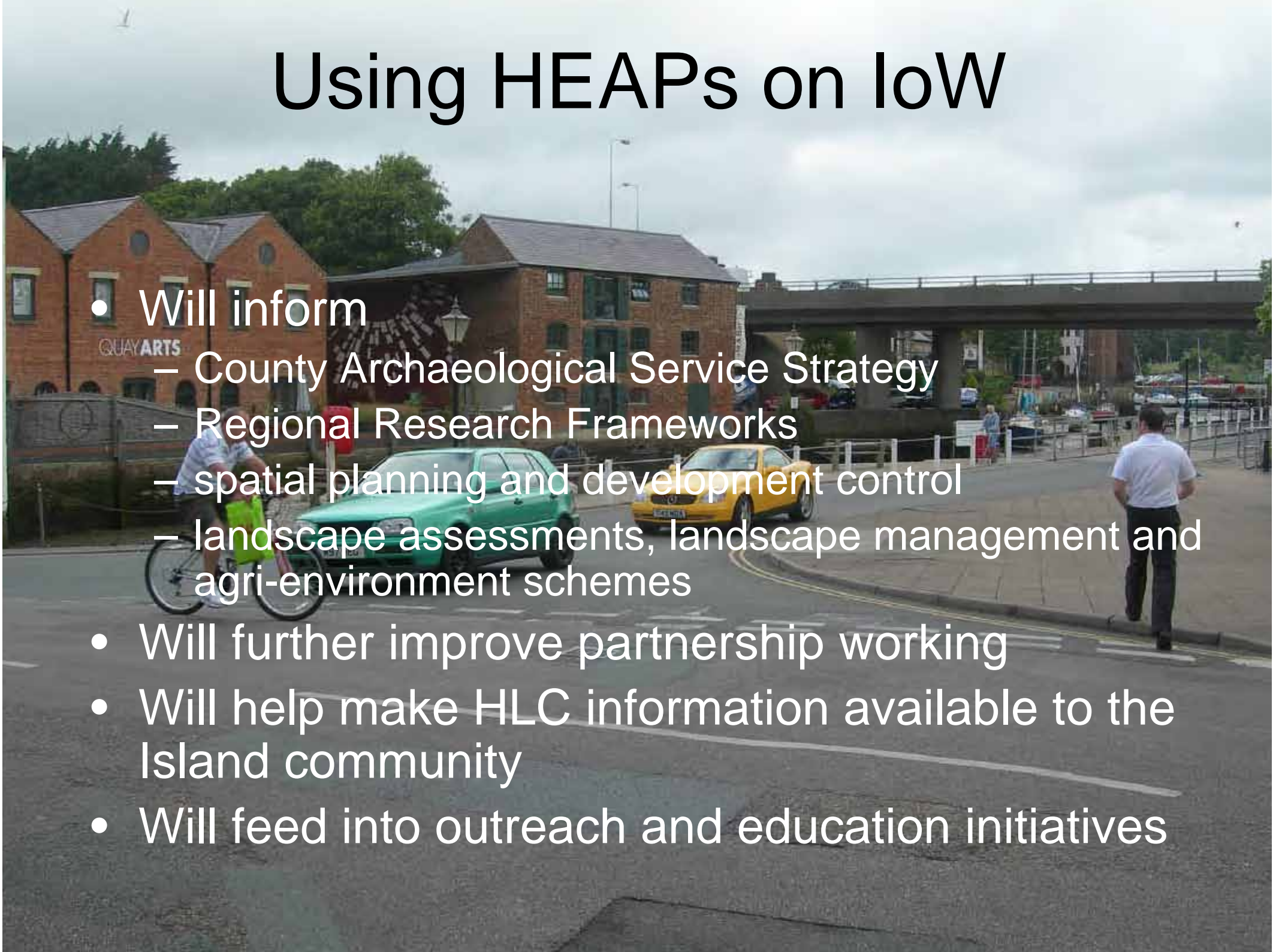
Wider stakeholders involved in selected events

HEAPs also widely consulted on in Local Development Framework process including formal adoption by Isle of Wight Council

And HEAPs incorporated into the public review of the Isle of Wight AONB Management Plan

Using HEAPs on IoW

- Will inform
 - County Archaeological Service Strategy
 - Regional Research Frameworks
 - spatial planning and development control
 - landscape assessments, landscape management and agri-environment schemes
- Will further improve partnership working
- Will help make HLC information available to the Island community
- Will feed into outreach and education initiatives



CCWWD AONB HEAPs

A pilot project to develop methods of creating and using HEAPs in a protected area that has the benefit of formal management planning and numerous dedicated partners.



ENGLISH HERITAGE